



# GAT MONTHLY MEMBERSHIP PROGRESS REPORT

Results as of: 4/30/2021

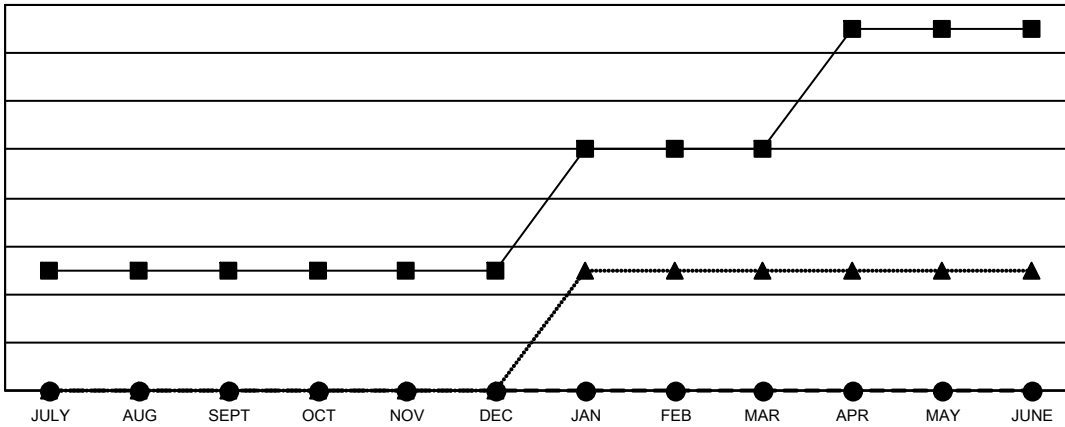
Multiple District 43

LOCATION: KENTUCKY

Clubs			
RESULTS FOR 2020-2021			
QUARTER	NEW CLUB GOAL	NEW CLUBS	DROPPED CLUBS
JULY/AUG/SEPT	1	0	1
OCT/NOV/DEC	0	0	0
JAN/FEB/MAR	1	0	5
APR/MAY/JUNE	1	0	0

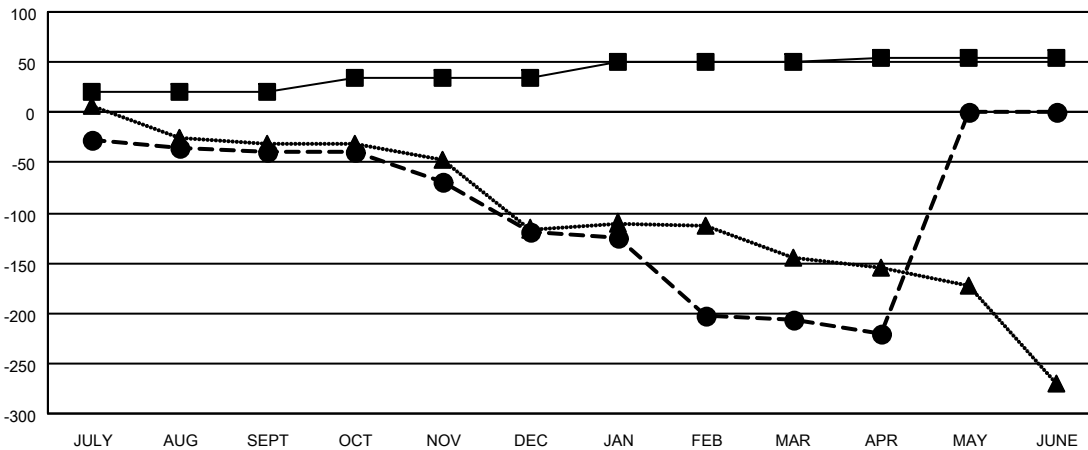
Members			
RESULTS FOR 2020-2021			
QUARTER	MEMBER GROWTH NET GOAL	MEMBER GROWTH ACTUAL	DROPPED MEMBERS ACTUAL (including transfers)
JULY/AUG/SEPT	20	42	77
OCT/NOV/DEC	15	57	131
JAN/FEB/MAR	15	54	133
APR/MAY/JUNE	5	24	34

GOALS AND ACTUAL NEW CLUBS CUMULATIVE



- - CURRENT YEAR GOALS FOR NEW CLUBS
- - CURRENT YEAR ACTUAL NEW CLUBS
- ▲ - LAST YEAR ACTUAL NEW CLUBS

GOALS AND ACTUAL MEMBERS CUMULATIVE



- - MEMBER GROWTH NET GOAL
- - MEMBER GROWTH ACTUAL
- ▲ - LAST YEAR MEMBERSHIP ACTUAL

DROPPED CLUBS: 6	
<u>DROPPED MEMBERS</u>	
DECEASED	60
CLUB CANCELLED	66
OTHER	249
<b>TOTAL</b>	<b>375</b>

54 CLUBS OF 159 ADDED 1 OR MORE NEW MEMBERS
<a href="#">CLICK HERE FOR CUMULATIVE MEMBERSHIP DATA</a>

<u>GENDER DISTRIBUTION</u>	
MALE	2,468 (66.90%)
FEMALE	1,221 (33.10%)
TOTAL FAMILY UNIT MEMBERS	758
FAMILY MEMBERS PAYING HALF DUES	390